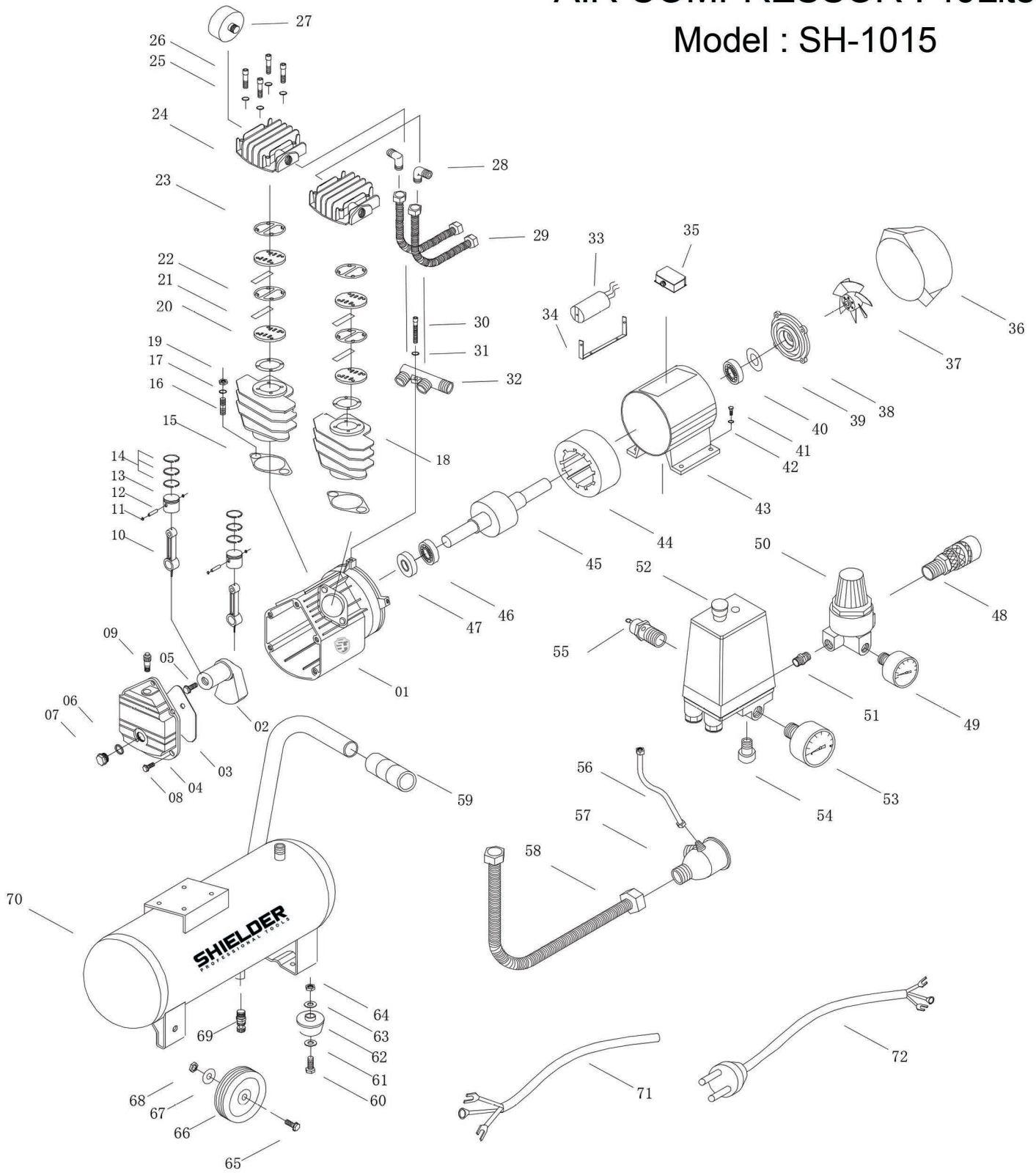


# AIR COMPRESSOR : 10Liter

Model : SH-1015



- |                      |                   |                   |                     |                    |                     |
|----------------------|-------------------|-------------------|---------------------|--------------------|---------------------|
| 01. crankcase        | 14. piston ring   | 27. filt element  | 40. bearing         | 53. pressure gauge | 66. wheel           |
| 02. crank shaft      | 15. gasket        | 28. elbow exhaust | 41. bolt            | 54. connect        | 67. washer          |
| 03. gasket           | 16. bolt          | 29. exhaust pipe  | 42. spring          | 55. safety valve   | 68. nut             |
| 04. crank case cover | 17. spring        | 30. bolt          | 43. pedestal        | 56. unloading pipe | 69. drain cock      |
| 05. bolt             | 18. cylinder      | 31. washer        | 44. stator          | 57. check valve    | 70. tank            |
| 06. gasket           | 19. bolt          | 32. support       | 45. rotator         | 58. exhaust pipe   | 71. electrical wire |
| 07. oil glass        | 20. valve gasket  | 33. capacitance   | 46. bearing         | 59. handle         | 72. plug            |
| 08. bolt             | 21. valve         | 34. support       | 47. oil sealing     | 60. bolt           |                     |
| 09. breath           | 22. valve plate   | 35. box           | 48. air cock        | 61. washer         |                     |
| 10. connecting rod   | 23. gasket        | 36. cover         | 49. pressure gauge  | 62. cushion foot   |                     |
| 11. circlip          | 24. cylinder head | 37. fan           | 50. regulator       | 63. washer         |                     |
| 12. piston pin       | 25. spring        | 38. cover         | 51. connect         | 64. nut            |                     |
| 13. piston           | 26. bolt          | 39. washer        | 52. pressure switch | 65. bolt           |                     |