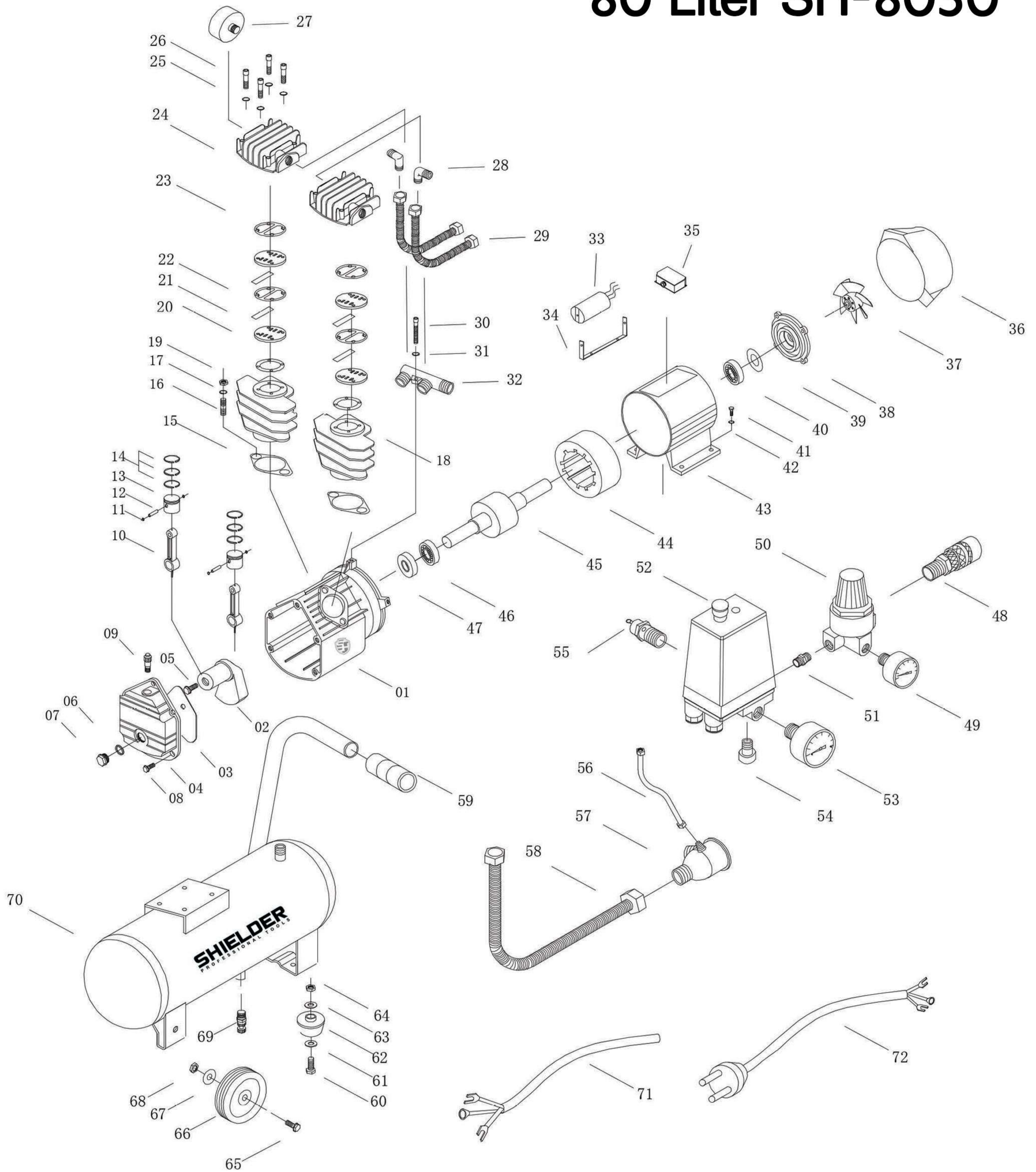


AIR COMPRESSOR 80 Liter SH-8030



- | | | | | | |
|----------------------|-------------------|-------------------|---------------------|--------------------|---------------------|
| 01. crankcase | 14. piston ring | 27. filt element | 40. bearing | 53. pressure gauge | 66. wheel |
| 02. crank shaft | 15. gasket | 28. elbow exhaust | 41. bolt | 54. connect | 67. washer |
| 03. gasket | 16. bolt | 29. exhaust pipe | 42. spring | 55. safety valve | 68. nut |
| 04. crank case cover | 17. spring | 30. bolt | 43. pedestal | 56. unloading pipe | 69. drain cock |
| 05. bolt | 18. cylinder | 31. washer | 44. stator | 57. check valve | 70. tank |
| 06. gasket | 19. bolt | 32. support | 45. rotator | 58. exhaust pipe | 71. electrical wire |
| 07. oil glass | 20. valve gasket | 33. capacitance | 46. bearing | 59. handle | 72. plug |
| 08. bolt | 21. valve | 34. support | 47. oil sealing | 60. bolt | |
| 09. breath | 22. valve plate | 35. box | 48. air cock | 61. washer | |
| 10. connecting rod | 23. gasket | 36. cover | 49. pressure gauge | 62. cushion foot | |
| 11. circlip | 24. cylinder head | 37. fan | 50. regulator | 63. washer | |
| 12. piston pin | 25. spring | 38. cover | 51. connect | 64. nut | |
| 13. piston | 26. bolt | 39. washer | 52. pressure switch | 65. bolt | |